

Digi WiFi



Xbee Pro S2



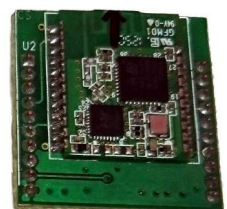
Xbee Pro S1



Xbee S1



Xbee 865



AmpedRf BT24

Our Arduino compatible development platform that includes a Xbee 20 pin socket, i2c interface & DS1307 RTC, AT24V64 EEPROM, 8 channel ADC, ATMEL ISP programmer interface, programmable through USB, Xbee and other serial modules using the Bootloader. The board also features a precision Bandgap adjustable Analog reference for the micro's ADC. All of the PortB, PortC & PortD are available through the respective headers on the board. The board features 6 LED's which indicate the board's power and communication status.

The Xbee socket can take in various add-ons from us, listed below are the ordering options...

- |                            |                     |
|----------------------------|---------------------|
| 1) Digi WiFi Module        | SCI/WiFi/XbeeS6B    |
| 2) Xbee S2 Pro 2.4GHz      | SCI.Xbee/S2Pro      |
| 3) Xbee S1 Pro 2.4GHz      | SCI/Xbee/S1Pro      |
| 4) Xbee S1 2.4Ghz          | SCI/Xbee/S1         |
| 5) Xbee S2 2.4GHz          | SCI/Xbee/S2         |
| 6) Xbee 865MHz             | SCI/Xbee/865        |
| 7) AmpedRf BT 24 Bluetooth | SCI/BL/AMPEDBT24    |
| 8) AmpedRf BT53 BLE        | SCI/BL/AMPEDBT53    |
| 9) AmpedRf WiFi WF43A      | SCI/WiFi/AMPEDWF43A |
| Our Arduino Compatible     | SCI/EDB-IOT/M88PA   |
|                            | SCI/EDB-IOT/M168P   |
|                            | SCI/EDB-IOT/M328P   |



## Spectrochem Instruments Pvt. Ltd.

B-23 Huda Complex, Saroornagar, Hyderabad, Telangana State, 500 035 INDIA  
 Ph: +91 402 420 1570-72, Email: spectro\_hyd@vsnl.net, URL: www.spectrochemindia.com